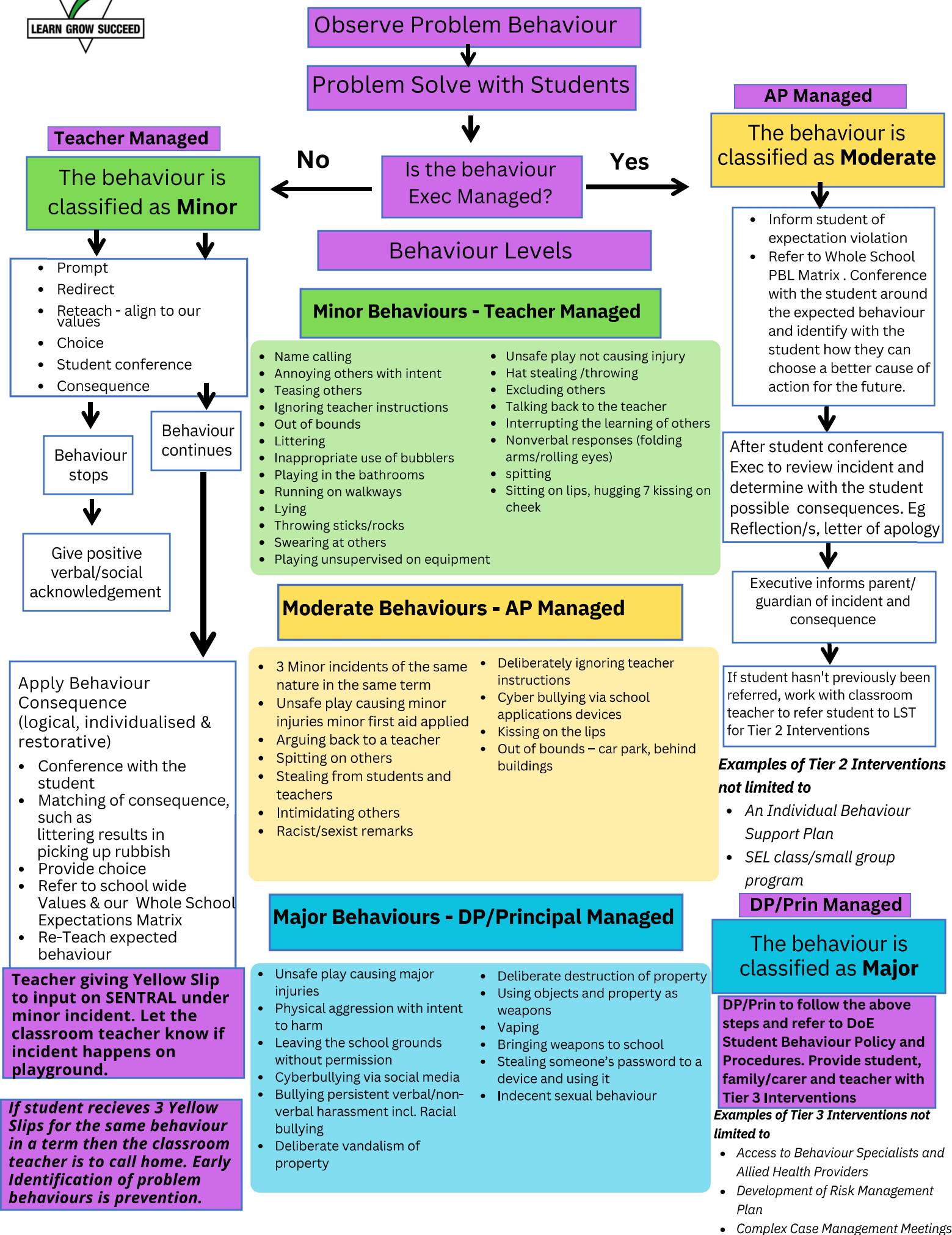




# Student Behaviour Identification Levels & School Management Processes



Observe Problem Behaviour

Problem Solve with Students

AP Managed

The behaviour is classified as **Moderate**

Is the behaviour Exec Managed?

Teacher Managed

The behaviour is classified as **Minor**

- Prompt
- Redirect
- Reteach - align to our values
- Choice
- Student conference
- Consequence

Behaviour stops

Behaviour continues

Give positive verbal/social acknowledgement

Apply Behaviour Consequence (logical, individualised & restorative)

- Conference with the student
- Matching of consequence, such as littering results in picking up rubbish
- Provide choice
- Refer to school wide Values & our Whole School Expectations Matrix
- Re-Teach expected behaviour

Teacher giving Yellow Slip to input on SENTRAL under minor incident. Let the classroom teacher know if incident happens on playground.

If student receives 3 Yellow Slips for the same behaviour in a term then the classroom teacher is to call home. Early Identification of problem behaviours is prevention.

Behaviour Levels

Minor Behaviours - Teacher Managed

- Name calling
- Annoying others with intent
- Teasing others
- Ignoring teacher instructions
- Out of bounds
- Littering
- Inappropriate use of bubblers
- Playing in the bathrooms
- Running on walkways
- Lying
- Throwing sticks/rocks
- Swearing at others
- Playing unsupervised on equipment
- Unsafe play not causing injury
- Hat stealing /throwing
- Excluding others
- Talking back to the teacher
- Interrupting the learning of others
- Nonverbal responses (folding arms/rolling eyes)
- spitting
- Sitting on lips, hugging 7 kissing on cheek

Moderate Behaviours - AP Managed

- 3 Minor incidents of the same nature in the same term
- Unsafe play causing minor injuries minor first aid applied
- Arguing back to a teacher
- Spitting on others
- Stealing from students and teachers
- Intimidating others
- Racist/sexist remarks
- Deliberately ignoring teacher instructions
- Cyber bullying via school applications devices
- Kissing on the lips
- Out of bounds – car park, behind buildings

Major Behaviours - DP/Principal Managed

- Unsafe play causing major injuries
- Physical aggression with intent to harm
- Leaving the school grounds without permission
- Cyberbullying via social media
- Bullying persistent verbal/non-verbal harassment incl. Racial bullying
- Deliberate vandalism of property
- Deliberate destruction of property
- Using objects and property as weapons
- Vaping
- Bringing weapons to school
- Stealing someone's password to a device and using it
- Indecent sexual behaviour

- Inform student of expectation violation
- Refer to Whole School PBL Matrix . Conference with the student around the expected behaviour and identify with the student how they can choose a better cause of action for the future.

After student conference Exec to review incident and determine with the student possible consequences. Eg Reflection/s, letter of apology

Executive informs parent/guardian of incident and consequence

If student hasn't previously been referred, work with classroom teacher to refer student to LST for Tier 2 Interventions

Examples of Tier 2 Interventions not limited to

- An Individual Behaviour Support Plan
- SEL class/small group program

DP/Prin Managed

The behaviour is classified as **Major**

DP/Prin to follow the above steps and refer to DoE Student Behaviour Policy and Procedures. Provide student, family/carer and teacher with Tier 3 Interventions

Examples of Tier 3 Interventions not limited to

- Access to Behaviour Specialists and Allied Health Providers
- Development of Risk Management Plan
- Complex Case Management Meetings